



SELECT HP OPERATING MANUAL


**Issue A
1/9/09**

CONTENTS

1	DOCUMENT HISTORY	5
2	CONTACT DETAILS	5
3	HEALTH AND SAFETY	7
3.1	Explanation of symbols and references	7
3.2	Additional safety requirements	7
3.3	Usage in accordance with intended purpose	7
3.4	Operating staff	8
3.5	Bringing the system to a stop in the event of an emergency	8
3.6	Safety information for maintenance tasks	8
3.7	Disposing of system parts and operating materials	8
3.8	Unauthorised conversion and manufacturing replacement parts	9
3.9	Warranty claims and liability	9
4	ABOUT YOUR WATER PURIFIER	11
4.1	The Select HP range of units	11
4.2	Key Components of the Select HP	11
4.2.2	Touch screen display	11
4.2.3	Close coupled tank	12
4.2.4	Removable front cover	12
5	OPERATING YOUR WATER PURIFIER	13
5.1	Menu Structure	13
5.1.1	Power On screen	13
5.1.2	Start Up Screen	13
5.2	Power On screen	14
5.3	Menus	16
5.4	Clean routine menu	16
5.5	Dispense options menu	19
5.6	Settings menu	19
5.7	Maintenance	24
5.8	Systems menu	26
6	MAINTENANCE	31
6.1	Replacing media packs	31
6.2	Cleaning inlet screen filter	31
6.3	Cleaning procedure	32
6.4	Replacing the filter	33
6.5	Maintenance and service spares	34
6.6	Trouble shooting	35
7	Technical specification	37
7.1	Product outputs	37
7.2	Treated water specification	37
7.3	Water storage	37
7.4	Fuse rating / type	37

8	INSTALLATION	39
8.1	Installation Kit	39
8.2	Media Packs	39
8.3	Feedwater supply requirements	40
8.4	Electrical Supply	40
8.5	Unit positioning	40
8.6	Drain connection.....	42
8.7	Installation of media cartridge packs	42
9	APPENDIX.....	43

1 DOCUMENT HISTORY

Issue	Date of Change	Description of Change	Approved by
A		First Issue: 1/09/2009	

2 CONTACT DETAILS

We trust the system will meet all your expectations. However, should you have any additional questions concerning the equipment please do not hesitate to contact Purite Ltd at:

Purite Ltd
Bandet Way
Thame
Oxfordshire
OX9 3SJ
United Kingdom

For all spares and consumable enquiries contact:

Customer Services Department: Tel No. +44(0)1844 217141

For all service enquiries contact:

Service Department: Tel No. +44(0)1844 211555

For further sales enquires contact:

Sales Department: Tel No. +44(0)1844 217141

3 HEALTH AND SAFETY

3.1 Explanation of symbols and references



Danger

This symbol refers to any immediate dangers. Failure to follow the specified procedure could result in serious personal injury. Extreme caution should be observed when conducting any activity where this symbol is shown. Work should be completed by a trained competent person.



Warning

Electrical shock. Do not touch electrical components. Before performing tasks on parts of the electrical system, disconnect the system from the power supply.



This symbol refers to a possible danger. Failure to follow the specified procedure could result in personnel injury. Caution should be observed when conducting any activity where this symbol is shown. It is recommended work should be completed by a trained competent person.



Caution

This symbol refers to a possibly hazardous situation. Failure to observe these references may result in minor injuries and/or damage to property.

I This symbol points out important information for working with the system in the proper manner. Failure to observe these references may result in malfunctions in the system or impact on the environment.

3.2 Additional safety requirements

Country-specific requirements standards and regulations must be observed.

3.3 Usage in accordance with intended purpose.

The units must only be operated with water supplied in accordance with the quality described and the operating parameters specified in "installation details".

The units must not be operated unless in proper working order. Any malfunctions must be rectified immediately.

3.4 Operating staff

Only persons who have read and understood this Operating Manual should be permitted to operate the unit. When operating the units, it is important to observe all safety information.

3.5 Bringing the system to a stop in the event of an emergency

- Switch off via the display.
- Turn off the electrical supply.
- Shut off the water supply.

After remedying the damage:

- Open the water supply.
- Turn on the electrical supply.
- Restart the unit via the main display.

3.6 Safety information for maintenance tasks

The operator must take care to ensure that all maintenance, inspection and assembly tasks are performed by authorised and qualified professionals who have been sufficiently informed regarding the task at hand (via use of Operating Manual).

The system must be shut down and be protected from further use until all repair and maintenance tasks have been completed. It is essential to observe the shutdown procedure as described in this Operating Manual.

Before beginning tasks relating to electrical equipment/components of this system, a check must confirm that power has been disconnected from the corresponding section of the system. In addition, the system must be secured to prevent it from being turned on again unintentionally.

3.7 Disposing of system parts and operating materials

When they need to be discarded, consumables must be disposed of according to local and National requirements.

3.8 Unauthorised conversion and manufacturing replacement parts

Conversion or modification of the system is only permitted with the approval of the manufacturer. The same applies to making changes in the programming for the control system. Original replacement parts and accessories authorised by the manufacturer enhance safety. Use of other parts will void the warranty.

3.9 Warranty claims and liability

This product has been manufactured in accordance with ISO 9001:2008 procedures, after which it was subjected to a quality control process. If, however, you are unsatisfied with the unit, please contact the manufacturer (Purite Limited).

4 ABOUT YOUR WATER PURIFIER

The Purite Select HP purifies potable water. Water fed into the unit is pumped through a combination of filtration devices, ionic resin exchange units and reverse osmosis modules. Purified water produced by the unit complies with latest standards for laboratory grade water.

4.1 The Select HP range of units

- GP: Generation unit (with no close coupled tank).
- IT: Generation unit with close coupled 20 litre water storage tank
- GP BP: Generation unit with feed water boost pump
- BP/IT: Generation unit with close coupled water storage tank and feed water boost pump

Each of the above variants is available with 4 different output flow rates:

- HP 40 6 litres per hour
- HP 80 12 litres per hour
- HP 160 24 litres per hour
- HP 320 48 litres per hour

Please note that the above outputs are based on an 8 hour working day at 60psi (4 bar) inlet pressure, 25°C and maximum of 400 ppm total dissolved solids.

The unit type is detailed on its serial plate which can be found on the reverse side of the front cover.

The Select HP is provided with an installation kit for quick installation.

Both media packs are provided and packaged separately.

4.2 Key Components of the Select HP

4.2.2 Touch screen display

Operation of the Select HP is controlled solely through the touch screen display. System schematics are displayed for easy understanding of the unit's process.

4.2.3 Close coupled tank

The close coupled tank holds 20 litres of purified water. To dispense water a bib tap has been provided at the front of the tank.

Note: Generation units are NOT supplied with a water storage tank

4.2.4 Removable front cover.

The front cover is easily removed and provides access to the cartridge media packs.

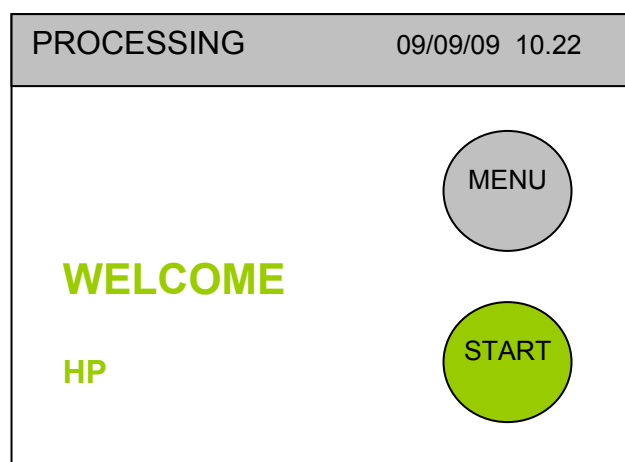


5 OPERATING YOUR WATER PURIFIER

Your Select HP is operated via the touch screen display. Buttons are provided on the display to access start menus and set up functions. The display also provides a mimic of the system when in operation.

5.1 Menu Structure

5.1.1 Power On screen



When connected to an electrical supply the power on screen is displayed.

5.1.2 Start Up Screen

Start

- Stop
- Dispense
- Menu A
- Text bar display options

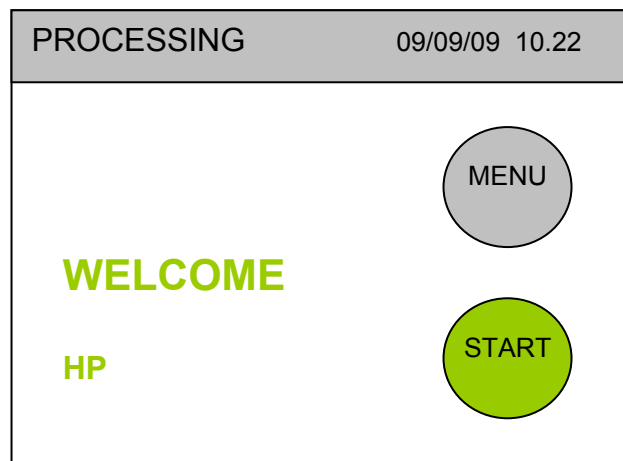
Menu

- Clean routine
 - Are you sure
 - Loop clean
 - clean
- Dispense options
 - Method
 - Volume
 - Manual Latched
 - Manual hold
- Settings menu
 - Language
 - English
 - Time and date
 - Set Time
 - Set date
 - Set Format

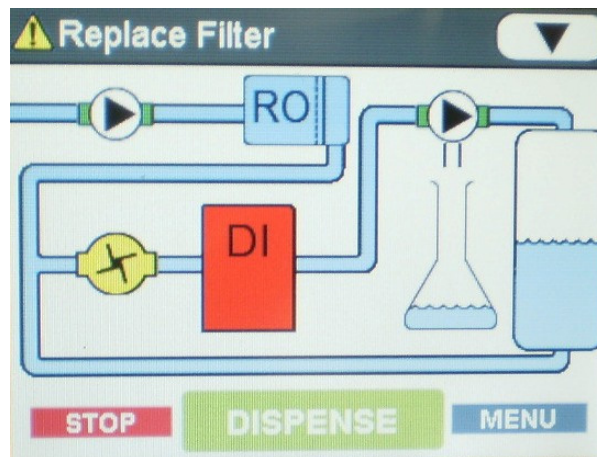
- Alarms
 - Audible alarm enable
 - Set Quality Alarm
 - Set Temperature alarm
- Maintenance
 - PT pack date
 - PP pack date
- System Menu
 - Product information
 - Engineer menu
 - Enter Pin No.
 - Set Unit ID
 - Auto restart
 - Enable
 - Disable
 - Data Transfer

5.2 Power On screen

To switch the unit on press the **START** button on the power on screen.



When start is pressed the following screen is displayed to show the unit is in operation and processing water.



The mimic screen shown above features four buttons and displays the process elements of the system. In normal operation they remain a fixed colour. However, in the event an alarm is detected or a specific process element goes into fault, the symbol on the display will flash red to indicate maintenance or corrective action is necessary. In addition the text bar at the top of the screen will alternate between showing an alarm is active and the data normally displayed.

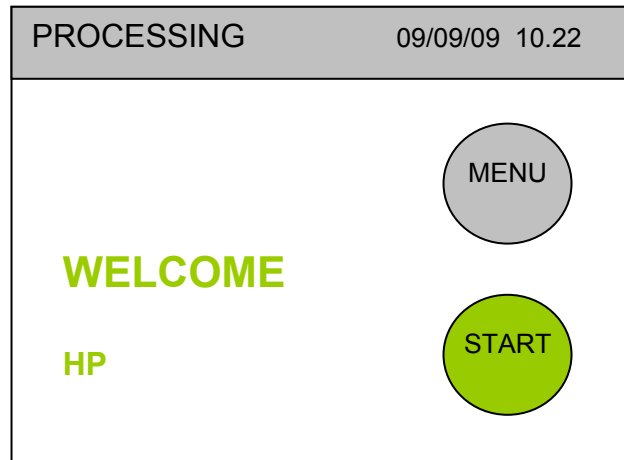
The mimic screen push buttons

- | | |
|-----------------|--|
| STOP | This stops the unit and returns you to the power on screen. |
| DISPENSE | When pressed, water is dispensed from the dispense point. It is not possible to dispense water from the unit until the tank is filled to its mid level switch. This may take a few minutes dependant upon model variant. |
| MENU | This accesses a secondary menu to allow dispense settings to be stored. |
| ▼ | Scrolls through the text bar display on the top of the screen to show
Alarms active
Temperature
Outlet quality
Outlet Quality Uncompensated |

These are features for display only and cannot be adjusted or reset from this screen.

If an alarm is active the text bar display will alternate between the active alarm and the last required display feature.

5.3 Menus



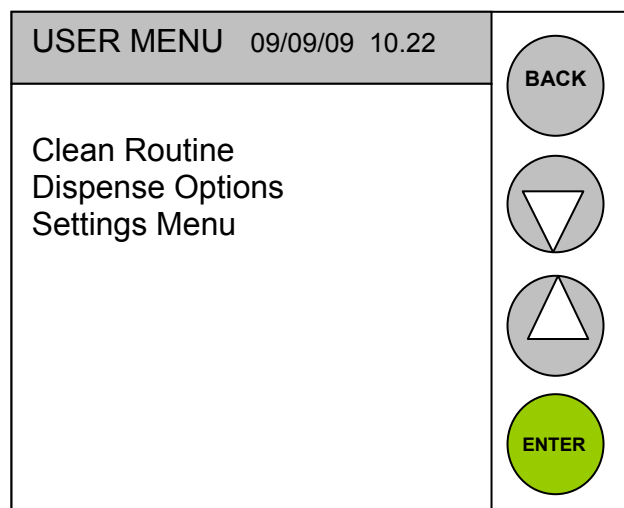
Pressing the menu button on the **POWER-ON** screen leads to a sequence of options, user definable parameters and information about your Select HP.

Menu screens feature buttons: **BACK**; **UP**; **DOWN**; **ENTER**.

UP and **DOWN** are used to move through the options available (or to increase or decrease numerical values). **ENTER** selects the option highlighted and **BACK** returns to the previous screen.

5.4 Clean routine menu

Selecting the **Clean Routine** from the menu begins the cleaning process. Prompts are provided to describe the insertion of the cleaning agents required for the process. i.e. remove media pack and replace with disinfect pack adaptor.



Selecting Clean routine commences the cleaning process. You will be required to confirm you wish to commence cleaning with the following prompt.

Refer to maintenance section before commencing the cleaning process.

USER MENU 09/09/09 10.22	
Are you sure?	<input type="button" value="NO"/> <input type="button" value="YES"/>

If yes is confirmed you will be required to select one of two cleaning routines.

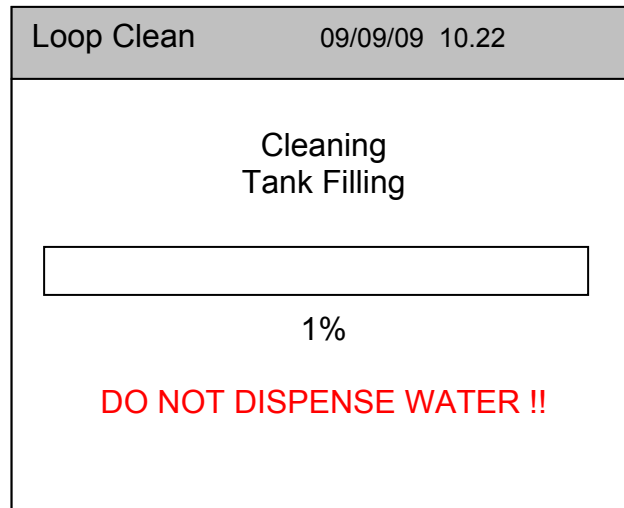
Two routines are available: **Loop Clean** and **Full Clean**

USER MENU 09/09/09 10.22	
Loop Clean Full Clean	<input type="button" value="BACK"/> <input type="button" value="▼"/> <input type="button" value="▲"/> <input type="button" value="ENTER"/>

Loop Clean circulates the disinfectant around the recirculation loop and the close coupled tank if one is fitted.

Full Clean circulates the disinfectant through the entire system.

During the a status bar displays progress.

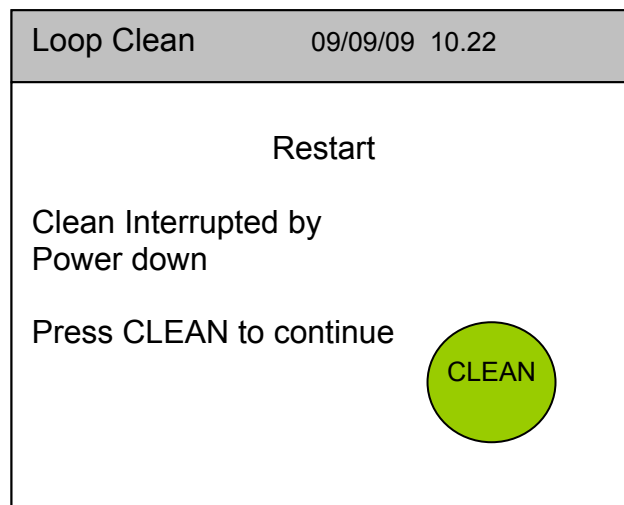


If power to the device is interrupted during a the process it is imperative the cleaning routine is completed.

When power is restored to the device it will start by displaying the screen below. Press **CLEAN** to resume the clean routine at the point it was interrupted



Failure to complete the clean routine may lead to chemicals remaining in the dispensed water.



5.5 Dispense options menu

Method	
<input checked="" type="checkbox"/>	Manual Latched
<input type="checkbox"/>	Manual Hold

BACK

▼

▲

ENTER

Dispense options enable different dispense methods to be set.

Manual latched

When the dispense button is pressed water is dispensed continuously until the dispense button is pressed again.

Manual Hold

The dispense button must be pressed and held down to dispense water. When the button is released water dispense is terminated.

5.6 Settings menu

System Menu	
Language	
Time and Date	
Alarms	
Maintenance	
System menu	

BACK

▼

▲

ENTER

The settings menu enables system parameters to be entered and stored

Language

Text displays can be set to be shown in one of two languages.

LANGUAGE 09/09/09 10.22	
<input checked="checked" type="checkbox"/> ENGLISH	<div>BACK</div> <div>▽</div> <div>△</div> <div>ENTER</div>
<input type="checkbox"/> FRENCH	

Highlight the appropriate tick box by pressing on it and then pressing enter.

Time and date

The system time and date can be set.

Time and Date menu	
Set Time	<div>BACK</div> <div>▽</div> <div>△</div> <div>ENTER</div>
Set Date	
Set Format	

Set time.

Programme current time by using up down arrows to increment digits and then pressing next.

Set Time	
10:30 HH / MM	<div>BACK</div> <div>▼</div> <div>▲</div> <div>NEXT</div>

Set Date

Programme current date by using up down arrows to increment digits and then pressing next.

Set Time	
09/07/2009 DD/MM/YYYY	<div>BACK</div> <div>▼</div> <div>▲</div> <div>NEXT</div>

Set Date format

Set Format	
<input checked="" type="checkbox"/> DD/MM/YY	<div>BACK</div> <div>▼</div> <div>▲</div> <div>ENTER</div>
<input type="checkbox"/> DD/MM/YYYY	
<input type="checkbox"/> MM/DD/YY	
<input type="checkbox"/> MM/DD/YYYY	

Highlight the appropriate tick box by pressing on it and then pressing enter.

Alarms

The device can be programmed to activate alarms in the event that defined parameters are exceeded. The alarms can be enabled to sound an audible buzzer.

Alarms	
Set Audible Alarm Set Quality Alarm Set Temp Alarm	<div>BACK</div> <div>▼</div> <div>▲</div> <div>ENTER</div>

SELECT HP USER INSTRUCTIONS

Audible alarm

This is enabled / disabled by selecting this in the audible alarm menu.

Audible Alarm Enable	
<input checked="" type="checkbox"/> Disabled	<div>BACK</div> <div>ENTER</div>
<input type="checkbox"/> Enabled	

Highlight the appropriate tick box by pressing on it and then pressing enter.

Set Quality Alarm

If a minimum water quality is required an alarm can be set should the water quality fail to meet this value. Enter the desired water quality alarm limit in the set quality alarm menu. Should water quality fall below this level the tool bar on the mimic screen will display an alarm is active. If the audible alarm is enabled a buzzer will sound.

Set Quality Alarm	
<div>01.0</div> <div>MΩ</div>	<div>BACK</div> <div>▽</div> <div>△</div> <div>NEXT</div>

Set Temperature Alarm

If dispensed water must be supplied below a certain temperature an alarm can be set. Enter the maximum permissible water temperature in the set Temp alarm menu. Should water temperature rise above this, the tool bar on the mimic screen will display an alarm is active. If the audible alarm is enabled a buzzer will sound.

Set Temp Alarm	
<h1>35.0</h1> <p>°C</p>	<div>BACK</div> <div>▼</div> <div>▲</div> <div>NEXT</div>

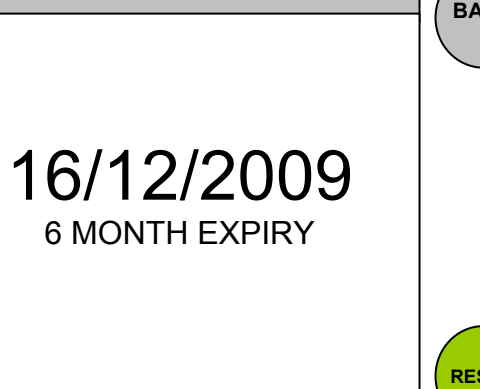
5.7 Maintenance

The maintenance menu provides the capability to set defined dates for replacement of consumable items in the device. These dates, when expired, will trigger an alarm which will be displayed on the mimic screen

Maintenance	
Puripac Pack Date Pretreat Pack date Filter date	<div>BACK</div> <div>▼</div> <div>▲</div> <div>ENTER</div>

Puripac Pack date

When the Puripac media pack is replaced it is necessary to reset the replacement date. This is done in the Puripac pack date menu. Enter the menu and press reset. Failure to reset and replace media packs will lead to poor quality water.



NCP Pack date

16/12/2009

6 MONTH EXPIRY



BACK

RESET

Pretreat Pack date

When The Pretreat media pack is replaced it is necessary to reset the next replacement date. This is done in the Pretreat pack date menu. Enter the menu and press reset. Failure to reset and replace media packs will lead to poor quality water.



Pretreat Pack date	
<div>16/12/2009</div> <div>6 MONTH EXPIRY</div>	

SELECT HP USER INSTRUCTIONS

Filter Date



When the filter is replaced it is necessary to reset the next replacement date. This is done in the Filter Date menu. Enter the menu and press reset. Failure to reset the filter date will lead to poor quality water.

Filter date	
<p>16/12/2009</p> <p>6 MONTH EXPIRY</p>	<p>BACK</p> <p>RESET</p>

5.8 Systems menu

The systems menu provides information about your device and enables identification of the unit.

System Menu	
<p>Product Information</p> <p>Engineer Menu</p> <p>Set Unit ID</p> <p>Auto Restart</p> <p>St Log Frequency</p> <p>Data transfer</p>	<p>BACK</p> <p>▼</p> <p>▲</p> <p>ENTER</p>

SELECT HP USER INSTRUCTIONS

Product Information

Product Information	
Type:	HP
Serial number:	123456
Unit ID:	00
Unit Version:	R.1.5
Pod Version :	R.1.6
Commissioning Date:	01/01/01
Memory Checksum:	OxFE66
Address	02

BACK

Displays data about your device.

Engineer Menu

For Purite Ltd service personal only

Set Unit ID

A discrete device identifier can be stored here should multiple units be used in one location.

Programme unit ID by using up down arrows to increment digits and then pressing next.

Set Unit ID
00

BACK

▼

▲

NEXT

SELECT HP USER INSTRUCTIONS

Auto restart

Returns the unit into operation automatically in the event of a power interruption.

Auto Restart	
<input checked="" type="checkbox"/> Disabled	<div>BACK</div> <div>ENTER</div>
<input type="checkbox"/> Enabled	

Highlight the appropriate tick box by pressing on it and then pressing enter.

Set Log Frequency

The device has an inbuilt data logger. Data is stored to the data logger at the set log frequency.

Set Log Frequency
<div>002</div> <div>Hours</div>

BACK

▼

▲

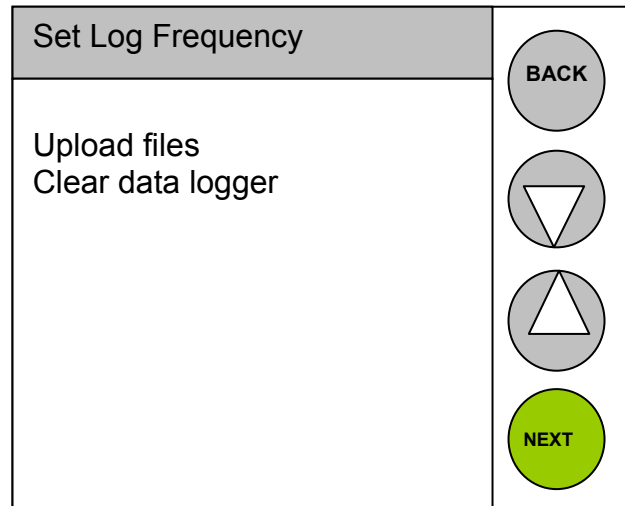
NEXT

Programme update rate by using up down arrows to increment digits and then pressing next.

SELECT HP USER INSTRUCTIONS

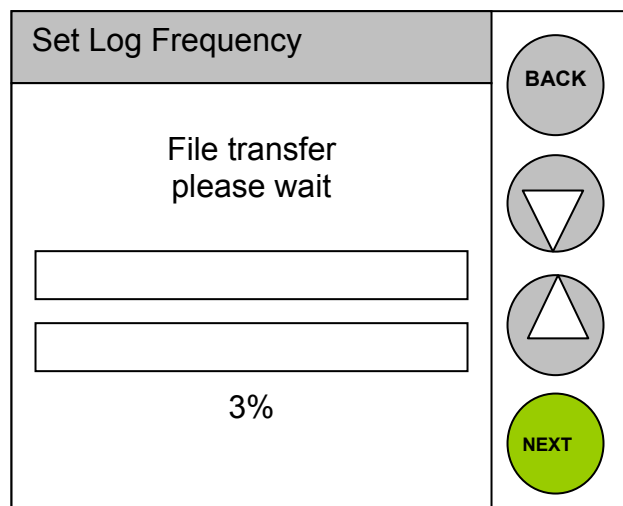
Data Transfer

Data transfer enables new software to be uploaded to the unit and enables clearing of data from the on board data logger.



Upload files

Insert data stick into the USB port on the underside of the dispense Pod



This may take some time depending upon the amount of stored data.

Data is stored to the data stick as a .CSV file which may be viewed using Microsoft Excel.

Clear data logger

Selecting and accepting clear data logger clears the on board data file log.

6 MAINTENANCE

6.1 Replacing media packs

Switch the unit off by pressing the STOP button.

Leave the unit to stand for 30 seconds to relieve any internal pressure.

Open the front door cover to expose the media packs.

Press down the black lever on top of the cartridge and pull it away from the retainer block.

Discard the media Pack and remove the new pack from its bag removing the two black plugs from the inlet/outlet ports.

Insert the media pack into the unit locating it in the media retaining block, push it home until it clicks into position and retaining mechanism clicks up.

Press "START" and follow the instructions on screen for setting new pack replacement date

After resetting pack date the unit can be started from the power on screen.

6.2 Cleaning inlet screen filter

- It is recommended that this filter is cleaned at least once per year.
- The inlet screen filter is located in the right hand side of the unit.
- Switch off the water supply at source
- To relieve any residual water pressure, momentarily switch the unit on then off.
- Remove the side panel of the unit.
 - To do so, first remove the front cover by pulling it gently from the unit using the hand holds provided.
 - Pull the pod assembly gently forward to disengage the top cover retaining pin.
 - Remove the top cover by lifting up at the front and sliding it gently backwards.
 - Remove the four retaining screws holding the side panel in place and slide gently backwards.

- The filter is located in the exposed panel on the right hand side of the unit.
- To obtain access to the filter screen, unscrew the black knurled top anti-clockwise. The screen will then be exposed. Pull the screen away from the housing and clean away any debris.
- Once cleaned, replace the screen and black top. Replace the side panel and cover using the reverse procedure and switch on the water supply. Start the unit from the power on screen

6.3 Cleaning procedure.

Ideally cleaning of the unit should be carried out when it is time to replace the media packs. It is recommended that the Select HP is cleaned approximately every 6 months.

It is generally recommended that the media packs should be replaced every 3-4 months.

Switch the unit, off, by pressing the STOP button

The unit will now have reverted to the power on screen

Turn off the water supply to the unit.

Remove the front door cover to reveal the media packs.

Loop Clean

Remove the right hand Puripac pack by pressing down the black lever.

To clean the unit insert the cleaning Pack Adaptor (Part No. L998549) into the pack position.

Full clean

Remove both media packs (Pretreatment and Puripac). Press down the black lever above the media pack and then pull gently on the pack to remove it.

To clean the unit insert a cleaning Pack Adaptor (Part No. L998549) into both pack positions.

Disconnect the tubing from the external storage tank and direct to drain.

Turn on the water supply.

Re-start the Select HP by pressing the start button on the power on screen.

If the command "PROCESS STANDBY" is displayed on the screen, drain off some water from the external tank. This command indicates that the tank is full.

With the unit showing "PROCESSING" leave it run in this mode for 30 minutes. Then "STOP" the unit as detailed above and leave to stand for a further 30 minutes.

After the full 60 minutes remove the disinfection pack adaptor and insert a new puripac pack.

With the new pack installed run the unit to drain for an additional 30 minutes or until all traces of chlorine have rinsed out.

Once rinsed **STOP** the unit and reconnect the tubing back to the external tank.

Re-start the unit, the display should indicate "**PROCESSING**" mode.

6.4 Replacing the filter

- It is recommended that this filter is replaced every 6 months.
- The filter is located in the left hand side of the unit.
- Switch off the water supply at source
- To relieve any residual water pressure, momentarily switch the unit on then off.
- Remove the side panel of the unit.
 - To do so, first remove the front cover by pulling it gently from the unit using the hand holds provided.
 - Pull the pod assembly gently forward to disengage the top cover retaining pin.
 - Remove the top cover by lifting up at the front and sliding it gently backwards.
 - Remove the four retaining screws holding the side panel in place and slide gently backwards.

- The filter is located in the exposed panel on the left hand side of the unit.
- Disconnect the tubing attached to the top and the bottom of the filter by pressing on the collet retainer and pulling gently on the tubing.
- Fit replacement.
- Replace the side panel and cover using the reverse procedure and switch on the water supply. Start the unit from the power on screen

6.5 Maintenance and service spares

	Part no.	Description
Membrane pack	M996001	Select 40 RO membrane pack
	M996002	Select 80 RO membrane pack
	M996003	Select 160 RO membrane pack
	M996004	Select 320 RO membrane pack
Pretreat cartridges	L998542	PT8 pre-treatment pack
	L998544	PT16 pre-treatment pack
Puripac cartridges	L998543	PP8 Puripac
	L998545	PP16 Puripac
Internal Filter	R011053	0.1µm filter
Tanks	L998410	50 litre external tank with UV
	L998411	100 litre external tank with UV
Extras	L300900	Select wall mount kit
	PM00901	Installation kit
	L991110	Feedwater pressure regulator
External filtration	L991276	10" filter housing
	R011044	10" 10um filter element
Others	L998549	Cleaning pack adaptor
	R083047	Level switch lead
	L300954	Operator's Manual (extra copies)

6.6 Trouble shooting

The touch screen communicates faults with the system via both the mimic screen and text lines.

The mimic screen shows each of the system elements. In normal operation these remain a fixed colour. In the event of a fault, the specific graphic showing the system element will flash red to indicate either a fault with this item or that maintenance is necessary.

A fault finding guide with corrective actions is shown below.

Displayed Message	Corrective action	
LHS pack not fitted	Check left hand side media pack is correctly located.	Push into position and listen for a click to ensure it is fully located in it retaining block
RHS pack not fitted	Check right hand side media pack is correctly located.	Push into position and listen for a click to ensure it is fully located in it retaining block
High pressure (BP) variants only	Feed water inlet pressure too high. Blockage in system	Check feed water supply regulation Call service department
Low pressure(BP) variants only	Insufficient feed water pressure	Check feed water supply Check inlet screen
Change Puripac	Puripac cartridge exceeded set date alarm or water quality above set limits	Replace media packs and reset system dates
Line cell error	Faulty cable – open circuit	Call service department
Replace filter	Filter date expired	Replace internal 0.1µm filter

7 Technical specification

7.1 Product outputs

Product Outputs	Unit Size			
	40	80	160	320
@ 10 °C	3.6	7.2	14.4	30
@ 25 °C	6	12	24	48

7.2 Treated water specification

- Inorganics 14 to18 MΩ.cm
- pH¹ Neutral
- Bacteria < 1 cfu/ml
- Organics (TOC) <20 ppb as C
- Particles <0.1µm

¹ pH of stored water may decrease due to absorption of free carbon dioxide.

7.3 Water storage

Pure water storage.

The “IT” variant comes supplied with a 20 litre tank (external 50 and 100 litre tanks are available if extra capacity is required)

7.4 Fuse rating / type

IEC module fuse type: - (20x5mm), T5AH250V, conforming to IEC 127
Number per unit = 2.

8 INSTALLATION

Using the installation kit provided observe the following procedure to make your Select HP ready for use.

8.1 Installation Kit



The installation kit comprises

Contents:

3 metres ½" Blue hose,
7 metres 8mm nylon tubing,.
1 off Jubilee clip.
3 metres ,12mm nylon tubing,.
1 off 12mm stem elbow.
3 off 8mm stem elbows.

8.2 Media Packs



Your Select HP is supplied with two different media cartridge packs which are available in two sizes depending on your unit capacity.

A Pretreat pack and Puripac cartridge. Size 8 for unit types 40,80,160 and size 16 for unit type 320.

The Select HP must be fitted with a Pretreat pack PT8/PT16 and a Puripac PP8 or P16.

The Puripac must be fitted in the right hand position and the Pretreat cartridge in the left hand position when viewed from the front.

Refer to Section 6.4, Maintenance and service spares, for re-ordering details.

8.3 Feedwater supply requirements

Free chlorine	0.5 - 1.0 ppm as Cl ₂
Total dissolved solids (max)	1000 ppm
Temperature	1 - 40°C (33.8 – 103.9°F)

Feedwater pressure (max)	(90 psi)
Feedwater pressure (min)	(30 psi)
Design pressure	(60 psi)

Contact your supplier if the feedwater supply is outside these limits.

8.4 Electrical Supply

Your Select HP will require a single phase electrical supply that meets the requirements below:

Electrical supply	KW rating	Current draw (amps)	External fuse rating
Single phase 100-240v ±10% 50 Hz and Earth	0.1	1.0	Amps (conforming to BS1362)

Ensure that the mains supply is provided via a convenient switched outlet and is protected with a 5 amp fuse.

8.5 Unit positioning

The Select HP has been designed to be mounted on a bench or wall.

Bench Mounted

Locate the unit on a suitable work surface, ensuring access to tank dispense bib tap and sufficient clearance to rear of the machine for all water and electrical connections.

All water feed connections are found on the rear of the unit. Using the installation kit provided attach the water feed, drain and overflow tubing.

Wall Mounted

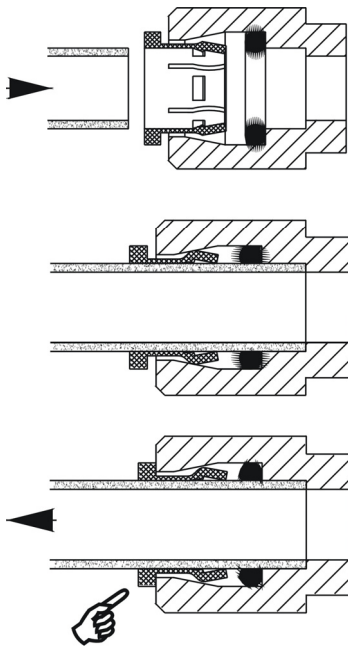
Use a wall mount bracket (Part Number L300900 shown below)



Secure the bracket to a suitable wall. Careful consideration should be given to the strength and suitability of the wall as the working weight of the Select HP is 50Kg.

Secure the bracket to the wall. Remove the feet of the HP by unscrewing them. Place the HP on the wall bracket and fix to the bracket using screws through the feet mounting points.

Hose Connections



All hoses are connected to the unit via its push fit connectors. To make a connection, the hose is simply pushed in by hand; the unique patented locking system then holds the tube firmly in place without deforming it or restricting flow.

Cut the tube square and push in until the tube stops.

Ensure the tube is pushed into the tube stop, securing tube in position.

To remove tubing push collet against body and slide tube out of fitting

Water Inlet connection: Fit 8mm tubing to the **water inlet** connector found on the rear of the unit and the other end to your water supply.

8.6 Drain connection

Attach a suitable length of 8mm tubing to the **drain** connection so that the free end may be inserted into an appropriate drain. The tubing must not be kinked or the flow restricted in anyway.

If the drain is to be run over 5 metres and/or rises above the level of the unit then contact our Service Department for advice.



Attach a suitable length 12mm hose to the **overflow** connection on the unit and run to a suitable drain point. The drain must be lower than the unit. If the drain is to be run over 5 meters and/or rises above the level of the unit then contact our Services Dept for advice.

8.7 Installation of media cartridge packs

Remove the door of the unit by pulling gently on the hand hold provided in the door.

Remove the cartridge media packs from their packaging and remove the black protective caps from the inlet and outlet ports.



Insert the Pretreatment (PT8 or PT16) in the left hand retaining block pushing it home until it clicks into position and retaining mechanism clicks up. Insert the Puripac PP8 or PP16 pack in the right hand retaining block pushing it home until it clicks into position and retaining mechanism clicks up.

- Replace the front cover by locating the top of the cover under the retaining mouldings and lifting the bottom of the cover until it slides in fully.
- Switch on water supply to the unit.
- Switch on the electrical supply to the unit.
- Reset both pack dates as instructed.
- This touch screen display will illuminate and display the start screen.

9 APPENDIX

- Process flow and flow diagram
- CE declaration
- WEEE declaration

Process flow (to be read in conjunction with flow diagram)

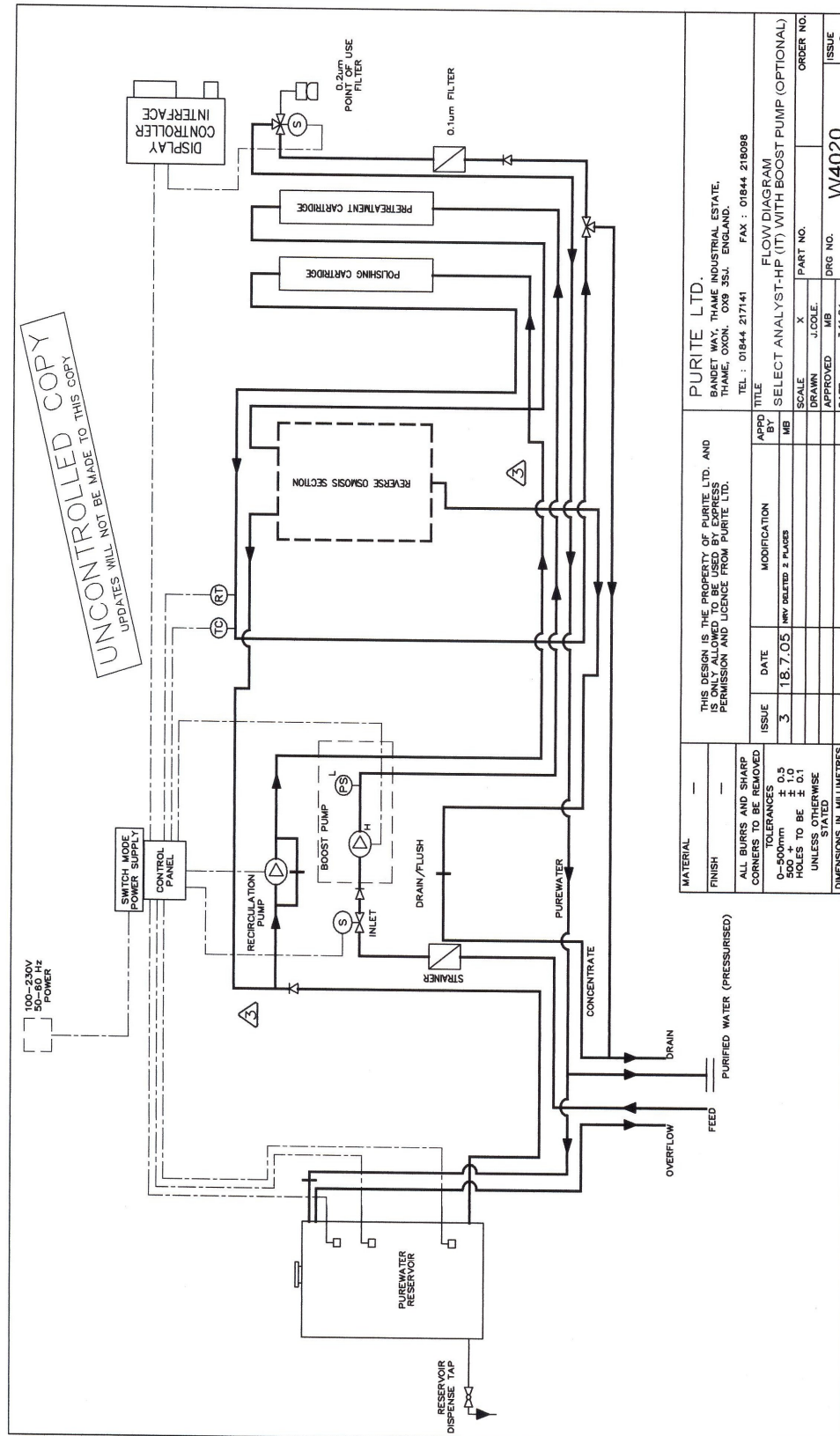
All external hydraulic and electrical connections are positioned at the rear of the unit, to protect them from accidental damage.

Potable feedwater enters the unit and is treated by the Pre-treatment pack, (carbon), protecting the reverse osmosis membrane from possible chlorine degradation. The treated water then enters the reverse osmosis module/s. Purified water passes through the membrane and is termed; the permeate (85-95% of salts removed). The water containing the rejected salts passes across the membrane and out of the RO module to drain and is termed, the concentrate.

The concentrate flow rate is controlled by a fixed orifice restrictor located in the drain line and is set at approximately 60 ltrs/hr.

The permeate leaving the RO module is pressurised by a recirculation pump before being further purified by a Puripac media pack containing mixed ion-exchange resin and activated carbon. The purified water is then filtered by a 0.1µm filter before passing to the dispense valve located in the pod of the HP.

Purified water is circulated around this loop on a continuous basis through the storage tank.





Purite Limited,
Bandet Way, Thame
Oxon, OX9 3SJ, UK.
Tel: +44 (0)1844 217141
Fax: +44 (0)1844 218098
Web site: www.purite.com
Email: mail@purite.com
Company Registration
No. 1464412

CE DECLARATION OF CONFORMITY

We, the Manufacturer:

Purite Limited, Bandet Way, Thame, Oxon, OX9 3SJ, United Kingdom
Declare under sole responsibility that the SELECT/PRESTIGE product range covered by this declaration, conforms with the essential protection requirements of the following Directives:

Applied Council Directives:

2004/108/EC - Electromagnetic Compatibility Directive (EMC).

2006/95/EC - Low Voltage Directive (LVD).

(Standard Applied: EN 61010-1:2001-02, Safety requirements for electrical equipment for measurement, control and laboratory use Part 1: General requirements).

The SELECT/PRESTIGE range covered by this declaration is as follows:

HP 40, 80, 160, 320, 640 with and without BOOST PUMP
BIO 40, 80, 160, 320, 640 with and without BOOST PUMP
PRESTIGE DESCALE PD50/50H/100/100H/150/250
FUSION 40,80,160 with and without BOOST PUMP
BECKMAN HP320
NEPTUNE ANALYTICAL, LIFE SCIENCE, ULTIMATE

Purite Limited's liability under this declaration is limited to that set forth in the current Purite Limited Terms and Conditions of Sale.

Signature:



Full Name: R S Keep

Position: Director

Date of issue: 05.08.07

Appendix F





Users in the United Kingdom who wish to discard electrical and electronic equipment that was supplied by Purite should contact B2B Compliance on 01691 676 124.

Users in other European Union countries should contact their Producer, who will be the organisation in their country that supplied the product.

Information on disposal in other countries outside the EU

This symbol is only valid in the European Union. If you wish to discard this product, please contact your local authorities or dealer and ask for the correct method of disposal.
